



2023

PRODUCT CATALOG

duravent

TURBOTORCH
AN ESAB BRAND



K-FLEX

**NO-FREEZ
UTILITY
ANTIFREEZE**

HBX
Control Systems Inc.

 **CALEFACTIO**

DAB
WATER • TECHNOLOGY

**KASA
SPECIALTIES**

walraven
Specialty Hangers &
Supports

 **Triangle
Tube**

 **MIRO**
INDUSTRIES, INC.
ROOFTOP SUPPORT PRODUCTS

PLUMBTECH



Terms & Conditions

KASA INDUSTRIES

101a E Industrial Park Dr
Manchester, NH 03109



603-626-1909



orders@jandksales.com

TERMS OF PAYMENT: 2% 10, Net 30

FREIGHT ALLOWANCE POLICY:

1. Complete shipment is to a single destination from Kasa Industries warehouse.
2. Freight Carrier to be selected by Kasa Industries.
3. \$1,500 USD net order value is met
4. No full freight allowed on factory direct orders

SPECIAL CONDITIONS:

1. Select Walraven, K-flex and Utility 1 Gal Products need to be ordered in full case quantities
2. Polypro 9' lengths of pipe need to be shipped in full case quantities - cases broken for pick up only
3. Fiber glass insulation is sold in 3' sections / PVC Jacketing sold in 4' sections

RETURN POLICY:

1. No goods shall be returned to Kasa Industries for credit without prior written consent of Kasa Industries.
2. Kasa Industries reserves the right to levy a minimum handling and re-stocking charge of 20%
3. All returned goods shall be sent prepaid unless Kasa Industries agrees
4. All goods will be subject to inspection upon return to verify they are in resaleable condition. Credit will not be issued for any item that fails inspection upon return
5. Fiberglass and factory only material are noncancelable/nonreturnable

DATE: 9/2023

TABLE OF CONTENTS



04 Calefactio
Hydronic Solutions

06 DuraVent
Polypro, FasNSeal, B Vent,
DuraFlex, DuraTech, Stove Pipe

08 Dab Pumps
Evosta2 - Electronic Circulators

10 HBX Controls
Boiler and HVAC Controls

12 KASA Specialties
Fiberglass Insulation, Boiler Stand,
Cable Tie Tool, Buckets

13 Miro Industries
M-Hex Rooftop Support

14 K-Flex Insulation
& Accessories

16 Plumbtech
Commercial & Residential Toilet Seats

17 TurboTorch
Acetylene, Map-Pro/Propane, & Accessories

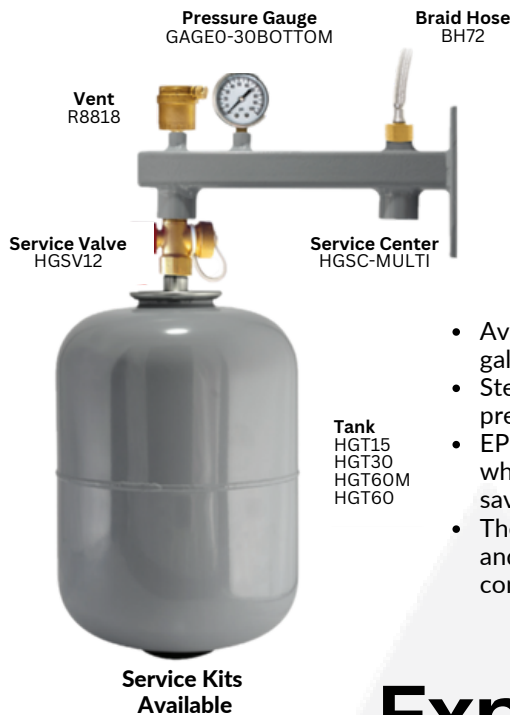
18 Triangle Tube
Maxi-Flo Heat Exchanger

20 Utility NoFreez
Propylene Antifreeze

21 Walraven
Speciality Hangers & Supports



CALEFACTIO



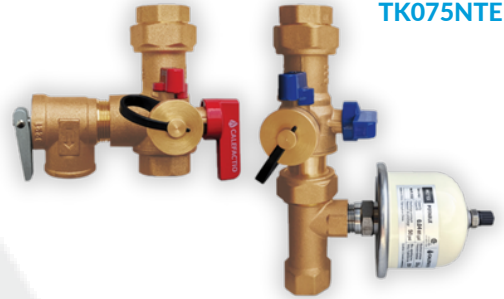
Heating



Potable



ALL-IN-ONE TANKLESS WATER HEATER SERVICE VALVES WITH EXPANSION TANK TK075NTE



- Available in sizes ranging from 2 to 74 gallons - mounted in-line or on base.
- Steel shell designed to resist high pressures, making installations safer.
- EPDM bladder separates air from water while preventing water infiltration and saving space and energy.
- These devices are suitable for heating and cooling installations and are also compatible with glycol.

Calefactio's service valves kit is designed for tankless water heaters under 2 gallons.

The expansion tank function is to absorb the increased volume of water which results from the heating process, thereby keeping the system's pressure below the relief valve setting. It also acts as a water hammer or shock absorber to absorb a sudden change in fluid velocity after the sudden closing of a faucet.

Expansion Tanks *Heating & Potable*



Benefits

- Filling valve - System filling easier with 3-way valve and filling kit for the GMP6 and GMP18
- Prevent major floods
- No direct connection to potable water
- Connected with flexible braided hose
- Provides leak detection
- By-pass valve
- Easy maintenance
- Suggested self priming pump
- Optional alarm Kit available



CONDENSAFE



CS2

Compact Condensate Neutralizer
w/ Time Indicator (12 Months)

- Easy to Install
- Wall supports included
- Contained media
- No disconnect required
- No by-pass needed
- Connects to hard pipe
- Long-life HD tank/cover



CSNP20

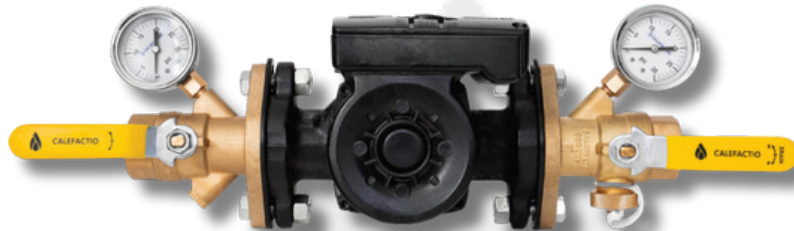
Condensafe with Pump and
Time Indicator (12 Months)

- All-in-one
- Preserve drains from corroding
- Compact
- Designed to prevent fires and short circuit
- AC inlet port included
- Easy maintenance
- Non return valve



ΔP (DELTA P) PUMP FLANGE

THE ΔP PUMP FLANGE ALLOWS A QUICK OVERVIEW OF THE SYSTEM



Benefits

- ▶ Allows drainage on the system side or on the pump side
- ▶ Fits all high velocity pumps
- ▶ Reduce the number of joints to save you time and money
- ▶ Ensures a great seal due to its forged brass bod

Multiple options available:

- ▶ Sold as a kit or unit
- ▶ Kits/Units sold with or without drain
- ▶ Connection Options: NPT, SWEAT, PRESS, PEX F1960
- ▶ Sizes: ¾", 1", 1 ¼", 1 ½" or 2"

PRESSURE GAGE (Sold Separately)

0-30 PSI pressure gage ⅛" (#GAGE0-30BOTTOM)

0-100 PSI pressure gage ⅛" (#GAGE0-100BOTTOM)



Kit Includes:

- ▶ 1 flange valve with drain
- ▶ 1 flange valve without drain
- ▶ 4 gaskets
- ▶ 4 nuts and 4 bolts



Unit Includes:

- ▶ 1 flange valve with or without drain
- ▶ 1 gaskets, 2 nuts and 2 bolts

CAL-X-TRACT™

AIR & DIRT SEPARATORS

Impurities in the water caused by the presence of air, sand, cement, or other contaminants are common and can damage all system components. Calefactio's Cal-X-Tract range of air and dirt separators features stainless steel brush-type coalescing media designed to allow air bubbles and dirt particles to cling to it while maintaining a constant flow of fluid. This technology reduces the risk of corrosion and damage that could be caused by impurities in the system.

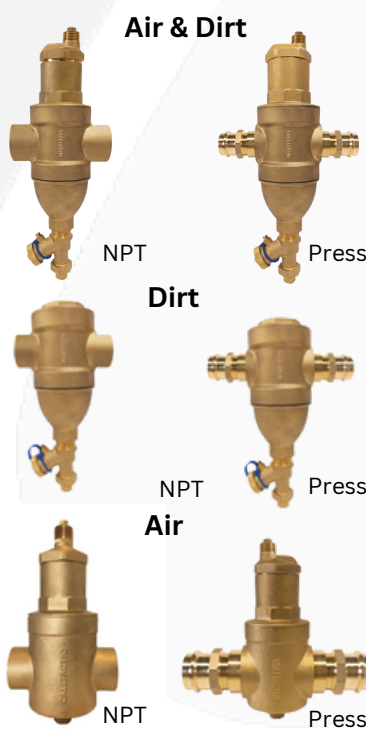
Air & Dirt Separators		
Model	Size	Connection
CXTAD-100N-MAG	1"	NPT
CXTAD-100P-MAG	1"	Press
CXTAD-125N-MAG	1-1/4"	NPT
CXTAD-125P-MAG	1-1/4"	Press

*Less magnetic options and additional sizes available

Dirt Separators		
Model	Size	Connection
CXTD-100N-MAG	1"	NPT
CXTD-100P-MAG	1"	Press
CXTD-125N-MAG	1-1/4"	NPT
CXTD-125P-MAG	1-1/4"	Press

*Less magnetic options and additional sizes available

Air Separators		
Model	Size	Connection
CXT-100N	1"	NPT
CXT-100P	1"	Press
CXT-125N	1-1/4"	NPT
CXT-125P	1-1/4"	Press



CALBALANCE

HYDRAULIC SEPARATOR

CALBALANCE

Hydraulic separators are used to isolate primary circuits (boiler) from secondary circuits (application/heat transmitter) as much for flow than for charge loss.

Benefits:

- ▶ ½" FNPT thermometer port
- ▶ No need to install automatic air vent and air & dirt separator
- ▶ Easy to install and maintenance
- ▶ Minimize energy consumption
- ▶ Magnet including drain valve
- ▶ Coalescing media



duraventTM



PolyPro

PolyPro is a polypropylene vent pipe for use with ANSI Category II and IV gas-burning appliances, including high efficiency water heaters, condensing boilers and warm air furnaces.

- Can be cut to desired length.
- Gasketed connections have a precise, tight seal and does not require installation lubricant.
- Higher sustained operating temperatures than PVC/CPVC.
- Lightweight and easy to install.
- Terminations remain icicle free in freezing weather.



Listed with the appliance in the USA, check with appliance manufacturer. Intertek / ETL listed to ULC-S636 Listed as a Class IIA, IIB, and IIC vent system

FasNSeal

FasNSeal and FasNSeal Flex is for use with natural gas or propane Categories II, III and IV appliances or Canada's Type BH Gas Vent Systems, having a maximum rated operating temperature of 480°F.

UL Listed to UL 1738 and ULC S636



Type B Gas Vent

DuraVent BV round vent pipe is a Listed Type B gas vent pipe. Its adjustable fittings and standard short lengths eliminate all cutting, fitting and special engineering. An improved joint design provides for a rapid and secure connection in seconds. The use of our "DuraLock" feature gives installers the option of engaging this DuraTab instead of using sheet metal screws

UL Listed to UL 441



DuraFlex

Flexible stainless steel relining for masonry chimneys
UL 1777 and ULC S635

DuraFlex Pro: Listed to UL 1777 and ULC S635 (MH45609).

DuraFlex 316 & 304: Listed to UL 1777 and ULC S635 (MH45609).



duraventTM



DuraTech 5"-8"

DuraTech 5"-8" is a double-wall, all-fuel chimney system for use with wood stoves, fireplaces, furnaces, boilers, ranges, water heaters, or other appliances fueled by wood, oil, coal, or gas, and zero-clearance fireplaces that are factory-built.

UL 103 HT and ULC S604 System



DuraTech 10"-24"

10"-24" large diameter DuraTech is a 1" wall, all-fuel chimney system for use with wood stoves, fireplaces, furnaces, boilers, ranges, water heaters, or other appliances fueled by wood, oil, coal, or gas.

UL 103 System

14" < Factory



DuraBlack

Single-wall interior stovepipe for connecting wood stoves to manufactured chimney.

DuraBlack:

Materials and Construction
24-gauge steel construction.
Lock-seamed. Painted black.

DuraBlack Stainless Steel:

Materials and Construction
.020" 430 stainless steel



DVL

Double-wall interior stovepipe for connecting wood stoves to manufactured chimney.

Materials and Construction

.016" stainless steel inner wall.

.018" galvanized outer, painted black.

c-UL-us listed to ULC S641 (MH14089).





Water Resistant



Airvent Plug



Energy Saving



Ideal for replacement

Model	Application	Pump Body	Additional Feature	Technical Data
Evosta 2	Heating System	Cast Iron		Operating range: 0.8 - 15.1 gpm with head up to 18 ft. Pumped liquid temperature range: from +14 °F (-10°C) to +230 °F (110°C). Working pressure: 145 psi 10 bar (1000 kPa). Insulation class: F.
Evosta 2d	Heating System	Cast Iron	Full Display	Installation: with horizontal motor axis. Standard power input: single-phase 1 x 110-127 V~ 60 Hz.
Evosta San	Hot Water Circulating	Stainless Steel	Drinking Water Approved	Pumped liquid: Clean, free of solids and mineral oils, non-viscous, chemically neutral, with properties similar to water (glycol max 30%).

EVOSTA 2

Electronic Circulators

The circulator has a built-in electronic device that detects the changes demanded by the system, and automatically adapts the circulator performance accordingly, always ensuring optimum efficiency and minimum energy consumption



IPX5 Protection

This certified degree of protection prevents the infiltration of water in the mechanics and, most importantly, in the electronics: faults are reduced to a minimum for absolute peace of mind.

Steel Motor Casing

Made with stainless steel grade AISI 304 ensuring maximum comfort and long life, even in the case of cooling applications.

Airvent Plug

Designed with front electronics and breather plug providing access to the shaft in case of seizure.
Evosta 2: easier maintenance for greater peace of mind.

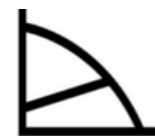
Calcium Removal Cartridge

The Evosta calcium removal system keeps the motor shaft in perfect condition, preventing the normal formation of limescale generally caused by air and water residue.

User Interface

The new user interface with sequential button makes easier the setting..with a shells finger

Operating Modes

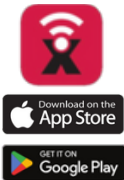
Proportional
Differential PressureConstant
Differential PressureFixed
Curve



Control
Systems Inc



Sensorlinx App



600 SERIES

WI-FI ENABLED CONTROLS

BOILER - GEOTHERMAL - SNOW MELT - ZONE

Model	Application	Function	Primary Feature	Secondary Feature
ECO-0600	Geothermal	Control equipment in a 2 pipe, single or dual tank, hydronic heating or cooling system	Control up to 4 heat pump stages	Single or Dual tank modes
CPU-0600	Boiler	Control boiler staging, system mixing, pump sequence, dual and differential setpoint applications	Multi staging up to 4 states per module	Expandable up to 16 stages
SNO-0600	Snow Melt	Control hydronic heating and electrical equipment to melt snow from driveways, ramps and walking surfaces	Weather Forecasting	Optical Snow Melt Sensing
ZON-0600	Zone	Control up to 4 Individual zone valves or pumps including radiant floor and forced air systems applications	Full Color Touch Screen Display	Bigger wiring enclosure for easy installation

THM-0600



THM-0100



SNO-0110



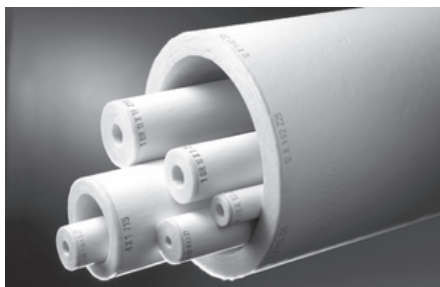
Additional Features and full product overview



KASA Specialties



Fiber Glass Pipe Insulation, PVC Jacketing



Suitable for installation over hot, cold, concealed and exposed piping systems with operating temperatures up to 850°F (454°C). Weather-protective jacketing is required for outdoor applications. Pipes operating below ambient temperatures require all joints to be sealed with the factory-applied, self-seal lap and butt strips.

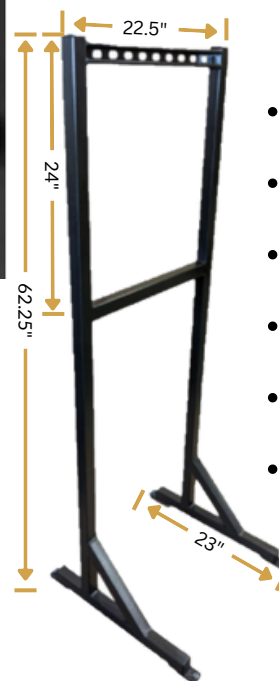
Fiberglass: sold in 3' sections **Jacketing:** sold in 4' sections

Fittings available: Tees, 45° and 90°

Mult-Function Boiler Stand

**No wall?
No Problem!**

- Large, Stable footprint
- Eliminates need to use or build a wall
- Appliance easily hung with strut-nut
- Welded steel construction
- Durable hammer finish
- lower cross support for stability



JABS-1

Fiber Glass Pipe Insulation Boiler Stands+ Cable Tie Tools + Bucket Organizers

PROZIP
CABLE TIE GUN SYSTEM

Stuff Sorter

ProZip Cable Tie System replaces conventional zip ties, allowing you to bundle cables without having to have various lengths. Endless Applications!



ProZip

- Fast, Easy, Economical
- Flexible sizing: 1/2"-50"
- Tightens Strip AND Cuts Flush
- No More Waste/No More Cleanup
- Reduces Cable Tie Inventory
- 55 lb Tensile Strength

Kits includes:



Bucket Organizers

502

Box Qty: 8
Components:

- (2) 401 Trays (4 1/2")
- (2) 201 Trays (2 1/2")
- (1) Lid
- (1) 5 Gallon Pail

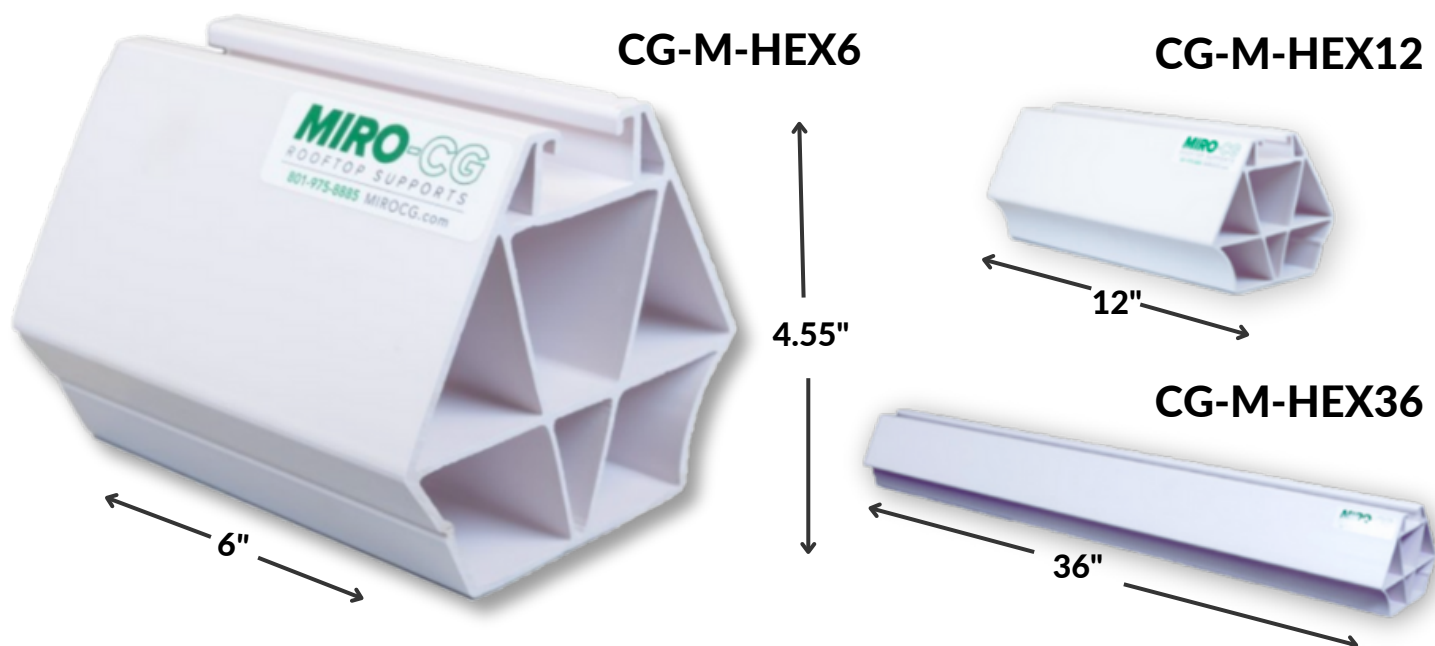
26125

Description: 1/2" + 3/4"
Combo Nipple Tray
Box Qty: 5



MIRO-CG

ROOF TOP SUPPORTS



3 OPTIONS IN 1 ROOF TOP SUPPORT

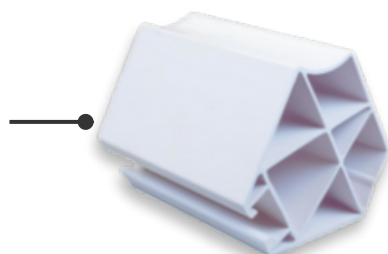


Strut

Attach clamps & fittings for conduit & other applications

Pipe Seat

Place up to 3" pipe directly on the pipe saddle



Drill Side

Use the drill guide to attached your own accessories

PRODUCT DESCRIPTION:

The M-Hex rooftop pipe support is designed to support a variety of rooftop piping and conduit. The unique design provides 3 options for use: the strut side can be used to attach clamps & fittings for conduit & other applications, the pipe seat side can be used to place up to a 3" pipe directly on the pipe saddle, and the drill side allows attachment of other accessories.

Material: PVC

Size: 4.5" H, 5.2" W | Available in 36", 12", or 6" length

Spacing: Supports should not exceed 10' on center.

Warranty: 2 year limited warranty.

SUGGESTED ROOFTOP LOADING:

6": 58 lbs at 3 PSI applied to surface. Max product load = 300 lbs.

12": 117 lbs at 3 PSI applied to surface. Max product load = 600 lbs.

36": 351 lbs at 3 PSI applied to surface. Max product load = 800 lbs.

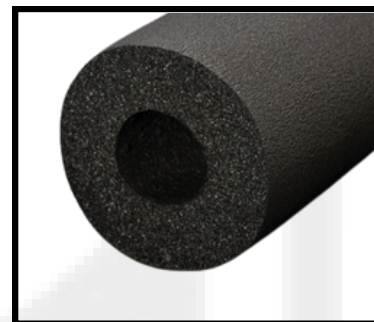


K-FLEX



K-Flex Insul-Tube

K-FLEX INSUL-TUBE is an NBR/PVC based closed cell, flexible elastomeric foam insulation. It is environmentally friendly as it is free of CFCs, HFCs, HCFCs, PBDEs, formaldehyde and fibers. An EPA-registered antimicrobial agent is incorporated into the product providing additional protection against mold, fungal and bacterial growth. It is UL GREENGUARD Gold Certified for low VOC emissions. The product's key physical properties are approved by Factory Mutual.



K-Flex PE

K-FLEX PE is a polyethylene based closed cell, flexible foam insulation meeting the requirements of ASTM C1427. It is environmentally-friendly as it is free of CFCs, HFCs, HCFCs, PBDEs, formaldehyde and fibers. K-FLEX PE contains no halogens. K-FLEX PE has excellent thermal, physical, and chemical resistance properties as exhibited by its low thermal conductivity and low water absorption and water vapor permeability values.



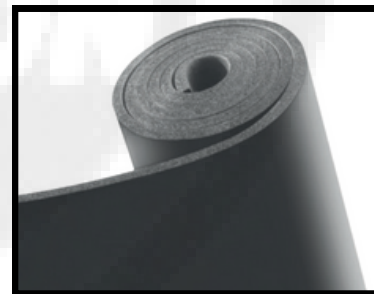
K-Flex Insul-Lock DS

K-FLEX INSUL-LOCK DS (DoubleSeal) is an NBR/PVC-based closed cell, flexible elastomeric foam insulation. It is pre-slit with a factory-applied pressure sensitive modified acrylic adhesive with scrim reinforcement on the seam surface and a flexible PVC overlap tape with acrylic adhesive for doubled seam security.



K-Flex Insul-Sheet

K-FLEX INSUL-SHEET is an NBR/PVC based closed cell, flexible elastomeric foam insulation. It is environmentally-friendly as it is free of CFCs, HFCs, HCFCs, PBDEs, formaldehyde and fibers. An EPA-registered antimicrobial agent is incorporated into the product providing additional protection against mold, fungal and bacterial growth. It is UL GREENGUARD Gold Certified for low VOC emissions.



K-Flex Titan

K-FLEX TITAN is a flexible coextruded jacketed composite material applied to K-FLEX NBR/ PVC tubular insulation. It is a polymeric jacketed material that offers excellent flexibility, abrasion and weather resistance, making it ideal for outdoor applications.





K-FLEX



Seam Tape



Flexible PVC strip tape with an aggressive acrylic adhesive and a **polyethylene** terephthalate (PET) release liner. Designed as a complementary product to K-FLEX Seam-Seal tubing for sealing flexible elastomeric joints.

Titan Tape



Designed as a complementary product to K-FLEX TITAN for sealing longitudinal seams and butt joints.

- Can be torn laterally
- Ensures airtight layer

Duct Tape



High Quality PE Duct Tape, adopts high grade fabric cloth with color polyethylene covering, coats improved synthetic rubber resin adhesive coated.

DT Tape-6 6 mil, 1.89" W x 180'
DT Tape-9 9 mil, 1.89" W x 180'

Cork Tape



Cork Tape is a cork-filled (55% by volume), rubber-based mastic material that has a grainy, rubber-like consistency.

Aluminum Tape



Has a pliable and malleable foil backing. It is coated with a cold weather solvent acrylic adhesive, protected by an easy-release silicone paper. The 2 mil thickness provides excellent tensile strength, while still easily conforming to irregular surfaces.

FSKT Tape



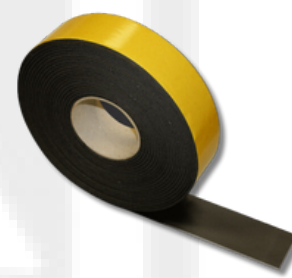
FOIL SCRIM KRAFT TAPE
High tensile strength aluminum foil, combined with cold weather acrylic water based adhesive, protected by an easy-release silicone release paper. Cold Weather version (low temperatures).

FTU Tape



ALUMINUM FOIL TAPE - UL181A & B-FX LISTED
High tensile strength aluminum foil, combined with cold weather acrylic water based adhesive, protected by an easy-release silicone release paper. Cold Weather version (low temperatures).

Foam Tape



K-FLEX Foam Tape is an NBR/PVC-based closed cell, flexible elastomeric foam insulation tape with a factory-applied pressure sensitive adhesive that adheres firmly and forms a long-lasting bond. It is environmentally-friendly as it is free of CFCs, HFCs, HCFCs, PBDEs, formaldehyde and fibers. An EPA registered antimicrobial agent is incorporated into the product providing additional protection against mold, fungal and bacterial growth.

K-flex Accesories



620 Adhesive

Black air drying solvent-based neoprene contact adhesive. Excellent for joining seams and butt joints of elastomeric pipe and sheet insulation.

PLUMBTECH™



Model 225-00



Model 423C-00



Model 154-00

Elongated White Plastic - Closed / Vari-Adjust / Lock-Down / Quik-Lok Technology

Model	Grade	Slow Close	Release "N" Clean
225-00	Standard	×	
241-00	Builder	×	×
261-00	Premium	×	×
204-00*	Builder		
206-00	Builder		×
211-00	Builder		

*Adjustable Hinges - No Vari-Adjust/Lock-Down

Elongated White Plastic - Commercial Open Front / No Covers

Model	Grade	Check Hinge	Lift Handles
407C-00	Standard		
421C-00	HD	×	
423C-00	HD	×	×
421SSC-00*	HD		
431SSC-00*	Extra HD		

*Self-sustaining Check Hinge

Elongated White Wood - Closed / Vari-Adjust / Lock-Down / Quik-Lok Technology

Model	Grade	Slow Close	Release "N" Clean
154-00	Premium	×	
102QL-00	Standard		
106-00	Builder		×

PLUMBTECH™



Model 224-00



Model 205-00



Model 153-00

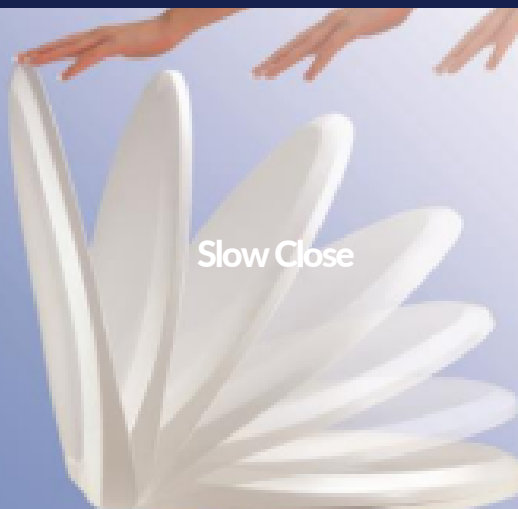
Round White Plastic - Closed / Vari-Adjust / Lock-Down / Quik-Lok Technology

Model	Grade	Slow Close	Release "N" Clean
224-00	Standard	×	
240-00	Builder	×	×
260-00	Premium	×	×
203-00*	Builder		
205-00	Builder		×
210-00	Builder		

*Adjustable Hinges - No Vari-Adjust/Lock-Down

Round White Wood - Closed / Vari-Adjust / Lock-Down / Quik-Lok Technology

Model	Grade	Slow Close	Release "N" Clean
153-00	Premium	×	
101QL-00	Standard		
105-00	Builder	×	×



For Specific Model Information



TURBOTORCH

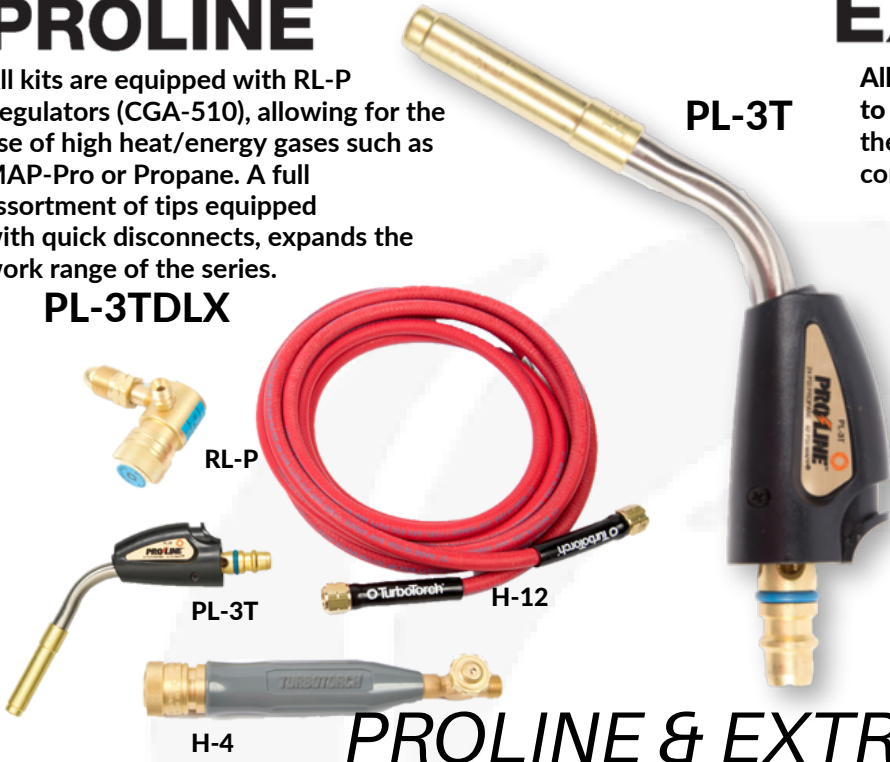
AN ESAB® BRAND



PROLINE

All kits are equipped with RL-P Regulators (CGA-510), allowing for the use of high heat/energy gases such as MAP-Pro or Propane. A full assortment of tips equipped with quick disconnects, expands the work range of the series.

PL-3TDLX



EXTREME® STK

All torches have 360 degree swivel tips and easy to clean orifice screws. Torch kits include the STK-R Pressure Regulator with CGA-600 connection



STK-99



PROLINE & EXTREME STK Map-Pro & Propane



PL-DLXPT

- Durable Tool Bag
- Self Lighting PL-3T Tip
- Ergonomic H-4 Handle
- STK-R Regulator
- TS-12 Hose
- Hose Clamp
- PL-4T Tip
- PL-812 Heat Shield

LP Series

- R-LP Adjustable Regulator
- Self Lighting PL-3T Tip
- Ergonomic H-4 Handle
- H-4 Hose
- Map-Pro & Propane Standard Tips
- *Additional kits available - LP-1 and LP-3



MT-1

Special pricing offered on 144+ Map/-Pro and Propane Tanks

PT-1



TX Series

TX-503 is a "cooler" torch, making it ideal for general plumbing jobs. TX-504 is suitable for HVAC and high capacity applications

Replacement tips available
Order TX-500 as a combo kit

Extreme Swirl Technology generates more heat than other hand torches for faster brazing times and less gas consumption

TURBOTORCH

AN ESAB® BRAND



Self Lighting

EXTREME

Standard

PL-5A



A-5



PL-5ADLX-B

G4

AR-B

- Self lighting tip sizes ranging 3/16" to 3/8"
- Standard tip sizes ranging 1/8" to 3/4"
- Replacement orifice and tips available

Self Lighting Kits

Model	Regul.	Tip	Connect.
PL-5ADLX-MC	AR-MC	PL-5A	MC
PL-5ADLX-B	AR-B	PL-5A	B
PL-8ADLX-MC	AR-MC	PL-8A	MC
PL-8ADLX-B	AR-B	PL-8A	B
PL-12ADLX-B	AR-B	PL-12A	B

Standard Kits

Model	Regul.	Tip	Connect.
X-3B	AR-B	A3 / A-11	B
X-4B	AR-B	A-5 / A-14	B
X-5B	AR-B	A-5	B
X-5MC	AR-MC	A-5	MC
X-6MC	AR-MC	A-3 / A-8	MC

*All items and components can be purchased individually + Additional tips sizes available

Air Acetylene Nitrogen Purge Regulators



GP250-500-580



245-03P

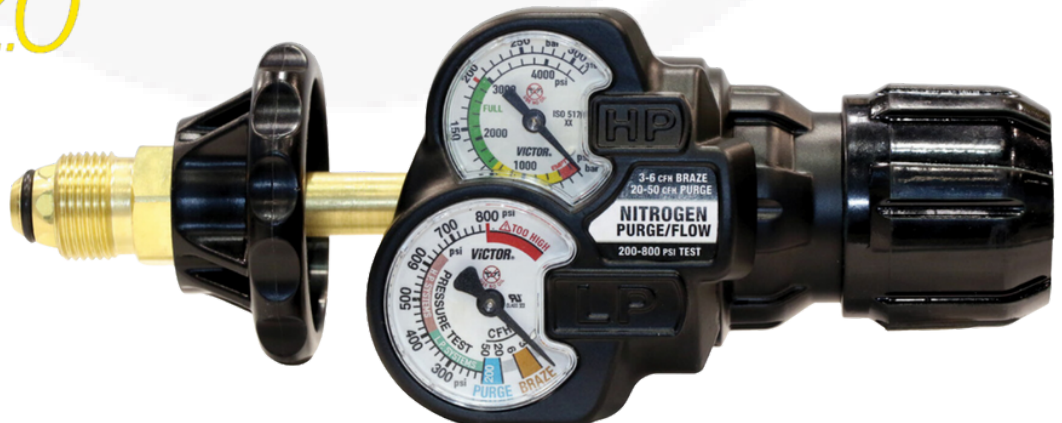


NFM-TT

EDGE 2.0

ESS32-PFH-580 PRESSURE/FLOW HYBRID REGULATOR

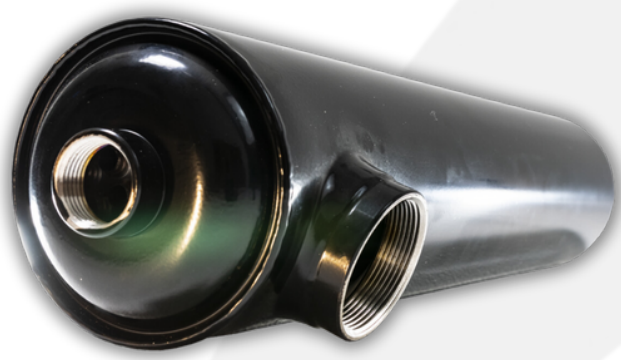
Newly developed dual stage orifice technology allows one regulator to control both pressure and flow allowing complete control of nitrogen for purging, brazing and high pressure testing.





Designed to fit your swimming pool, spa or hot tub. Constructed of stainless steel or titanium option - suitable for salt water applications

STANDARD FEATURES



- Constructed of high quality corrosion resistant stainless steel (AISI 316)
- Rolled formed to shape and then precision welded
- Specially designed built in flow turbulators to assure maximum heat exchange
- Leak tested to assure that they are totally functionable
- Compact in size and require a minimum installation space - light weight
- Perfect for all types of swimming pools, spas and hot tubs
- Equipped with stainless steel holding brackets

Maxi Flo

Heat Exchanger

Thermal Output Maxi-Flo Stainless Steel Heat Exchangers

Model	Thermal Output (Btu/hr)*	Hot Water Flow		Cold Water Flow		Heat Transfer Surface Sq. Ft.
		GMP	Pressure Drop Ft.	GMP	Pressure Drop Ft.	
MF-80	95,000	7	6	77	6	2
MF-135	135,000	7	2	52	3	3
MF-200	200,000	8	2	65	5	5
MF-260	260,000	9	2	77	6	6
MF-400	400,000	13	3	93	8	12

*correction factors must be taken into account for thermal outputs
Maximum working temperature 230° F
Maximum working pressure: 140 psi (primary and secondary)

Titanium Construction

Model	Thermal Output (Btu/hr)*	Hot Water Flow		Cold Water Flow	
		GMP	Pressure Drop Ft.	GMP	Pressure Drop Ft.
MF-135T	135,000	11	9	92	5
MF-260T	260,000	13	24	92	6



UTILITY



Original



No-Freez, the most trusted name in non-toxic anti-freeze. A chemically balanced inhibited solution engineered to give worry-free protection. Provides expansion point protection to -100°F. Systems will flow to -61°F.

Accepted for use in solar systems

Can be mix with similar brands



Polar



A heavy duty non-toxic anti-freeze designed for regions that experience extreme weather conditions. It is fully inhibited against metal corrosion and is safe, odorless and tasteless

Can be mix with similar brands

*NSF Suitable for incidental food contact such as should be used in breweries, distilleries, wineries, chillers and geothermal systems

Most Trusted Name in Non-Toxic Antifreeze

NO-FREEZ Antifreeze

AL Safe Polar

Uniquely designed formula blended with customized additives for an aluminum safe solution

Can be mix with similar brands

Super Polar

The most concentrated inhibited solution. Easy to follow mixing instructions available for total non-toxic protection against all types of weather and conditions

Can be mix with similar brands

RV Guard

Specifically engineered for recreational vehicles of all types, including boats. All of the ingredients are non-toxic, nonflammable and it is inhibited against metal corrosion.

Comparison Chart

	Original	Polar	RV/Boiler Guard	AL Safe Polar	Super Polar
	100% Mix	100% Mix	100% Mix	100% Mix	75% Mix
PG Ratio	50%	70%	25%	70%	94%
PG Quality	Pure	Pure	Pure	Pure	Pure
Expansion Point Protection	-100°F	-113°F	-50°F	-113°F	-112°F
Flow Point	-61°F	-76°F	0°F	-76°F	-75°F
Temperature Rating	-250°F	-250°F	-250°F	-250°F	-250°F

walraven

Specialty Hangers & Supports



699440

NBPS RapidStrut Bucket

Part Number	Description	Dimensions	Quantities
SR66518109	RapidStrut® Slide Nut	3/8"	20 pieces
SR66518113	RapidStrut® Slide Nut	1/2"	20 pieces
SR6528005	RapidStrut® Hammerfix	3/8" X 1-1/2"	15 pieces
SR6528007	RapidStrut® Hammerfix	3/8" X 3"	10 pieces
SR6528011	RapidStrut® Hammerfix	3/8" X 4"	5 pieces
SR6528016	RapidStrut® Hammerfix	3/8" X 6"	5 pieces
6566041	Strut End Cap		50 pieces
0854332	StarQuick® Universal Rail Adaptor		50 pieces
0854359	StarQuick® Threaded Rod Adaptor	1/2" rod	25 pieces
0854000	StarQuick® Duo Wall Bracket		100 pieces

NBPS RapidRail Bucket

Part Number	Description	Dimensions	Quantities
RR6513109	RapidRail® Slide Nut	3/8"	50 pieces
RR6523902	RapidRail® Hammerfix	3/8" x 1-1/2"	25 pieces
RR6523908	RapidRail® Hammerfix	3/8" X 3"	25 pieces
6566000	RapidRail® End Cap		50 pieces
0854015	starQuick® Clamp	1/2" CTS	100 pieces
0854022	starQuick® Clamp	3/4" CTS 1/2" IPS	50 pieces
0854332	starQuick® Universal Rail Adapter		50 pieces
0854359	starQuick® Threaded Rod Adapter	1/2" rod	25 pieces
0854000	starQuick® Duo Wall Bracket		100 pieces

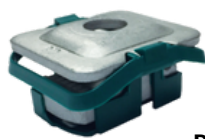


699441

Near Boiler Pipe System

NBPS RAPID BUCKETS

RapidStrut starQuick RapidRail



RapidStrut Side Nut



StarQuick Clamp



Rail Adaptor



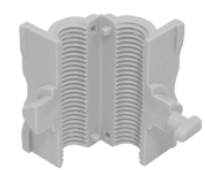
RapidRail Side Nut



RapidStrut Hammerfix



Duo Wall Bracket



Threaded Rod Adaptor



RapidRail Hammerfix



RapidStrut End Cap



RapidRail End Cap

walraven

Specialty Hangers & Supports



Metal Pipe Supports



BISMAT FLASH Clamp



BISMAT 2000



W2000 Cushion Clamp



W1000 Strut Clamp

BIS

Better Installation Systems

Plastic & Metal Pipe Supports



starQuick Clamp

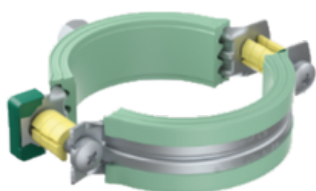


BIS AERO



W6000 Insulated Clamp

Plastic Pipe Supports



Bifix 5000



W5000
Cushion Clamp

In-Wall Solutions



RSWB
Shower Bracket Kit



RapidRail
Cantilever Arm

ABOUT US

Kasa Industries was established with a single mission, "To remove the logistical and transactional obstacles that our customers were facing". Since 1990, Our Agency has not wavered from our original mission and have been providing our customers industry leading brands with same day/next day availability for all products we offer.

Orders placed utilizing our JAK-Pak program allow you the ability to place an order across 15+ product lines under one purchase order allowing you to reduce redundant transactional costs. In addition, there are no minimum order requirements, broken box charges and the FFA is only \$1500 net.

Kasa Industries is proud to stock the following lines in our 25,000 sq foot facility located here in Manchester NH.





